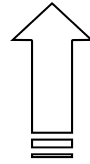


Aluminium Profile







Design Service

All our engineers are well trained and have many experience in the construction of aluminium profile systems. We are able to meet our customers specific application demands through the use of our in house CAD support service.

Cut To Length Service

We provide our customers with a Cut Down service to satisfy specific length requirements. The advantages are the cross-section ends are burr free and do not need to be reworked.

In House and On Site Assembly Service

With our experienced and trained technicians, and our fully equipped workshop on site, we are able to assemble efficiently to meet our customers high quality requirements.

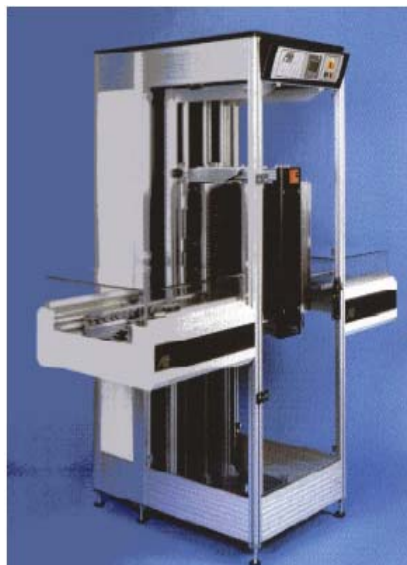
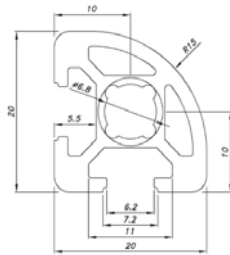


Table of Contents

	Page
Aluminium Profiles	6 - 7
Aluminium Profiles	7 - 8
Aluminium Profiles	8 - 9
Aluminium Profiles	9 - 10
Accessories	10 - 27

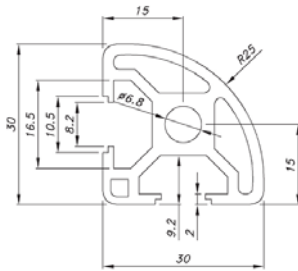


Profile 20 x 20 mm Quarter Round

Material	Aluminium
Weight	0.448 kg/m
Length	5000 mm

Part No :

CP 2020CR-6

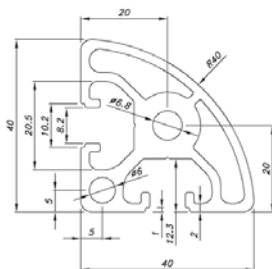


Profile 30 x 30 mm Quarter Round

Material	Aluminium
Weight	0.90 kg/m
Length	5000 mm

Part No :

CP 3030CR-8

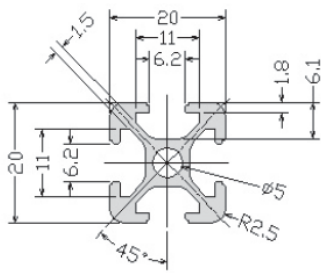


Profile 40 x 40 mm Quarter Round

Material	Aluminium (6063-T5)
Weight	0.95 kg/m
Length	5000 mm

Part No :

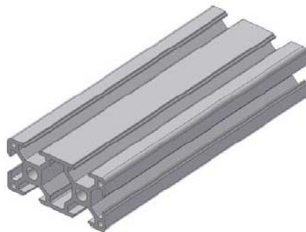
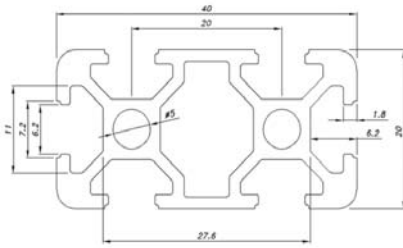
CP 4040CR-8



Profile 20 x 20 mm

Material	Aluminium (6063-T5)
Weight	0.465 kg/m
Length	6100 mm

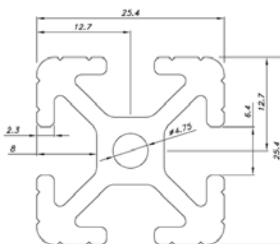
Part No : **CP 2020-6**



Profile 20 x 40 mm

Material	Aluminium (6063-T5)
Weight	0.808 kg/m
Length	6100 mm

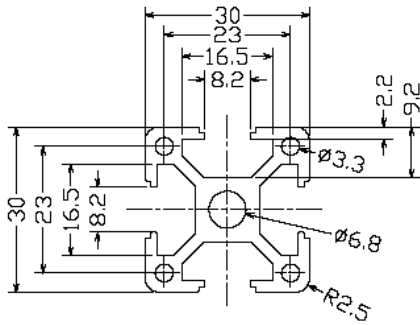
Part No : **CP 2040-6**



Profile 25 x 25 mm

Material	Aluminium (6063-T5)
Weight	0.825 kg/m
Length	5080 mm

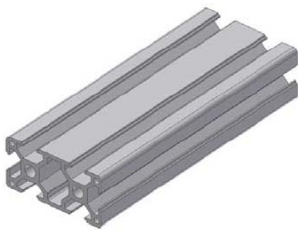
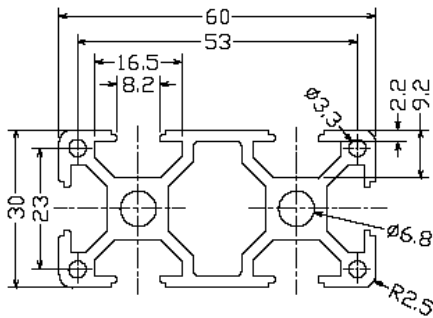
Part No : **CP 2525-6**



Profile 30 x 30

Material	Aluminium (6063-T5)
Weight	0.938 kg/m
Length	6100 mm

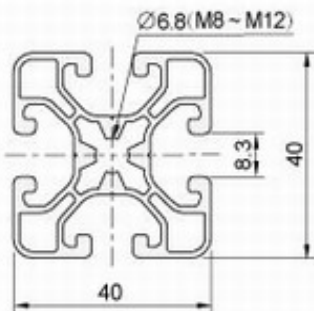
Part No : **CP 3030-8**



Profile 30 x 60 mm

Material	Aluminium (6063-T5)
Weight	1.832 kg/m
Length	6100 mm

Part No : **CP 3060-8**

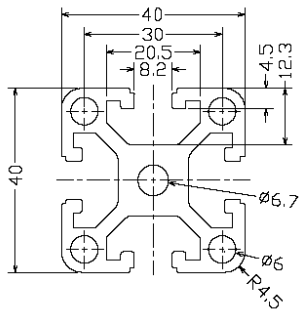


Light Duty Profile 40 x 40 mm

Material	Aluminium (6063-T5)
Weight	1.355 kg/m
Length	6100 mm

Part No :

CP 4040 L-8

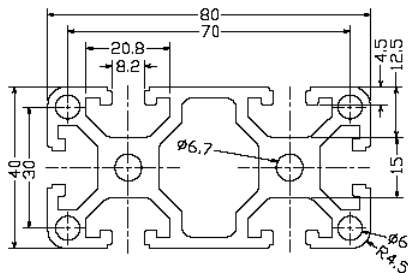


Heavy Duty Profile 40 x 40 mm

Material	Aluminium (6063-T5)
Weight	1.885 kg/m
Length	6100 mm

Part No :

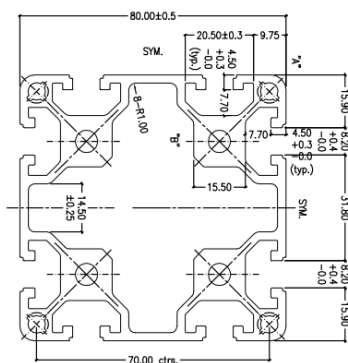
CP 4040 H-8



Profile 40 x 80 mm

Material	Aluminium (6063-T5)
Weight	3.77 kg/m
Length	6100 mm

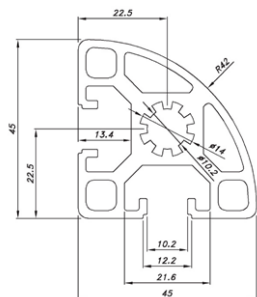
Part No : **CP 4080-8**



Profile 80 x 80

Material	Aluminium (6063-T5)
Weight	5.36 kg/m
Length	6100 mm

Part No : **CP 8080-8**

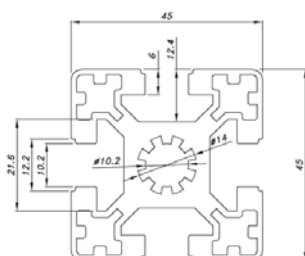


Profile 45 x 45 mm Quarter Round

Material	Aluminium
Weight	1.75 kg/m
Length	5000 mm

Part No :

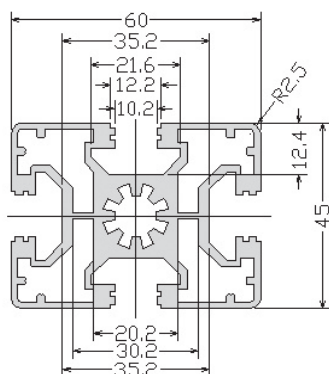
CP 4545CR-10



Profile 45 x 45 mm

Material	Aluminium (6063-T5)
Weight	2.36 kg/m
Length	6100 mm

Part No : **CP 4545-10**

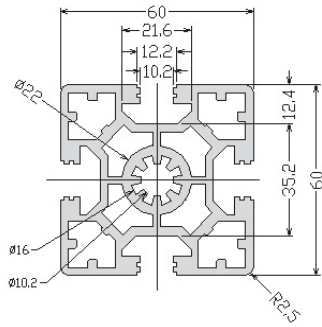


Profile 45 x 60

Material	Aluminium (6063-T5)
Weight	2.66 kg/m
Length	6100 mm

Part No :

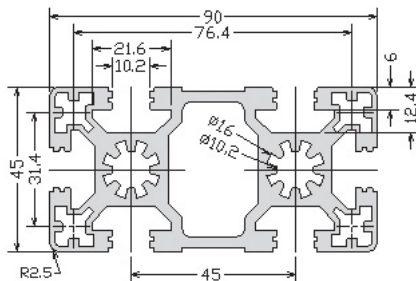
CP 4560-10



Profile 60 x 60 mm

Material	Aluminium (6063-T5)
Weight	4.08kg/m
Length	6100 mm

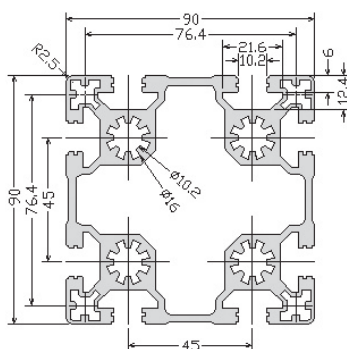
Part No : **CP 6060-10**



Profile 45 x 90 mm

Material	Aluminium (6063-T5)
Weight	4.11 kg/m
Length	6100 mm

Part No : **CP 4590-10**



Profile 90 x 90

Material	Aluminium (6063-T5)
Weight	6.32 kg/m
Length	6100 mm

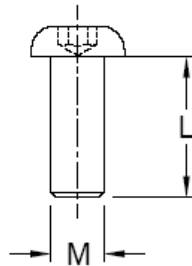
Part No :

CP 9090-10



Button Head Screw

Length
M5X10,
M6X10, 12, 16
M8X16, 20, 30



**Button Head Screw - M4,
M5, M6, M8**

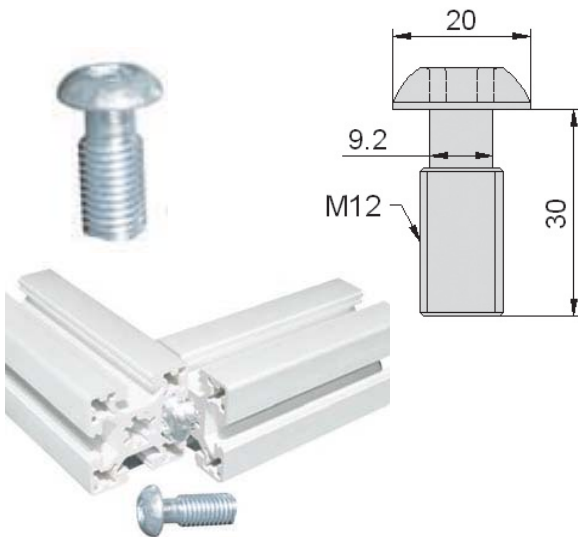
BH: Button Head Screw

Part No :

CP-BH 5X10

CP-BH 6X10 or (12, 16)

CP-BH 8X16 or (20, 30)



Screws - M12 X30

For simple, right angle and power lock connection.

Used for profile CP4545-10, CP6060-10 and CP4590-10 series profiles.

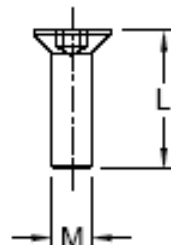
Part No :

CP-BH 12X30



Counter Sunk Screw

Length
M4X8
M6X16



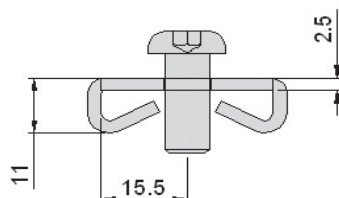
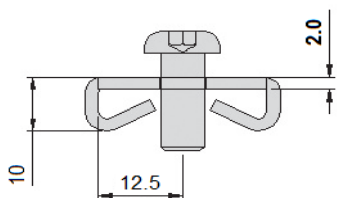
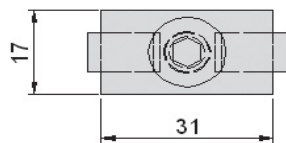
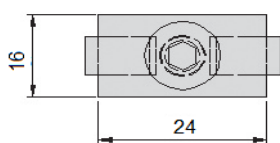
**Counter Sunk Screw - M4,
M6**

CS: Counter Sunk Screw

Part No :

CP-CS 4X8

CP-CS 6X16



CP-SJT8-8/3030

CP-SJT8-8/4040



Standard Fastener Set

Used together with button head screw M8X20 or M8X30.

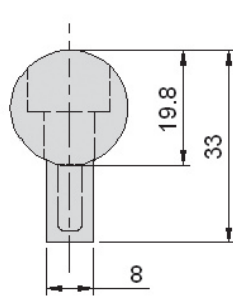
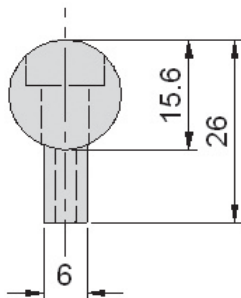
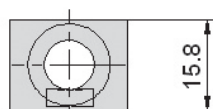
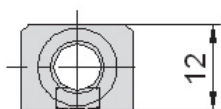
Used for **CP 4040-8** and **CP 3030-8** in right angled connections.

Material : Zinc Plated Steel

Part No :

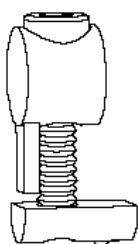
CP-SJT8-8/3030

CP-SJT8-8/4040



CP-UJT16-8/3030

CP-UJT20-8/4045



Universal Joint Set

Suitable for profiles which need to be moved frequently.

CP-UJT16-8/3030 used with button head screw **M6x25** and Half Round Nut **CP-HRN6-8/3030** for profile **CP3030-8**.

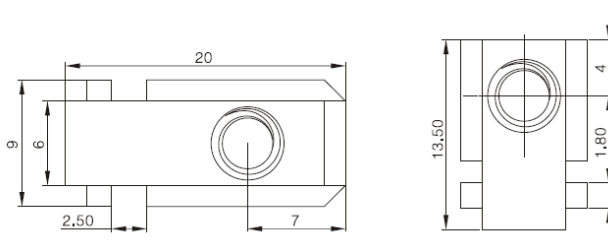
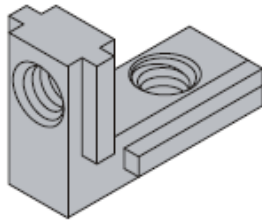
CP-UJT20-8/4045 used with button head screw **M8x30** and Half Round Nut **CP-HRN8-8/4040** or **CP-HRN8-10/4545** for profile **CP4040-8** or **CP4545-10**.

Material : Casted GD-Zn

Part No :

CP-UJT16-8/3030

CP-UJT20-8/4045



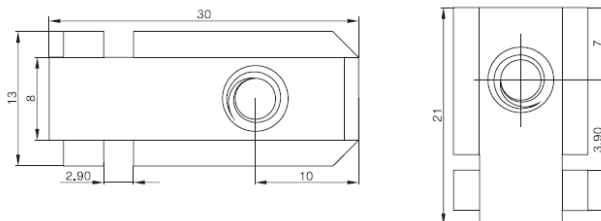
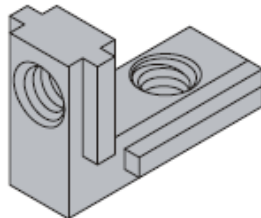
Interior Bracket 20x20

Used for **CP 2020-6** in right angled connections.

Material : Zinc Plated Carbon Steel

Part No :

CP-IB20x20-6



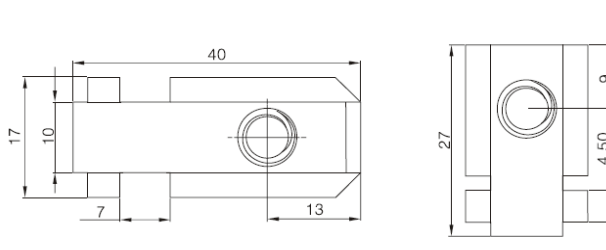
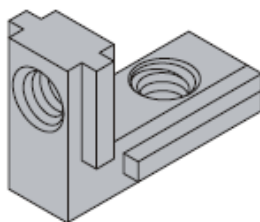
Interior Bracket 30x30

Used for **CP 3030-8** in right angled connections.

Material : Zinc Plated Carbon Steel

Part No :

CP-IB30x30-8



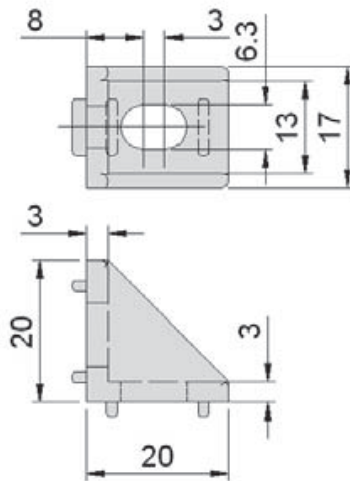
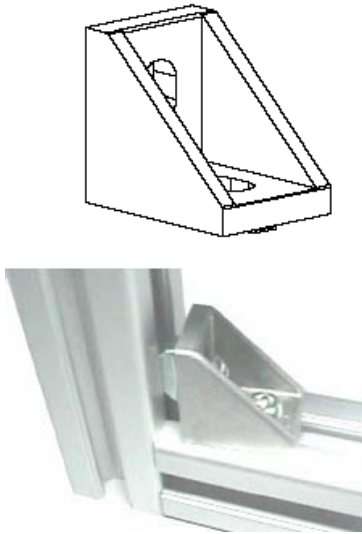
Interior Bracket 40x40

Used for **CP 4040-8** in right angled connections.

Material : Zinc Plated Carbon Steel

Part No :

CP-IB40x40-8



Gussett Element 20x20

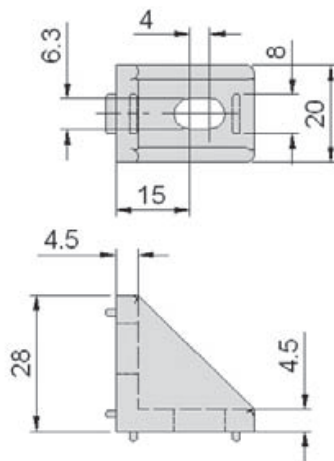
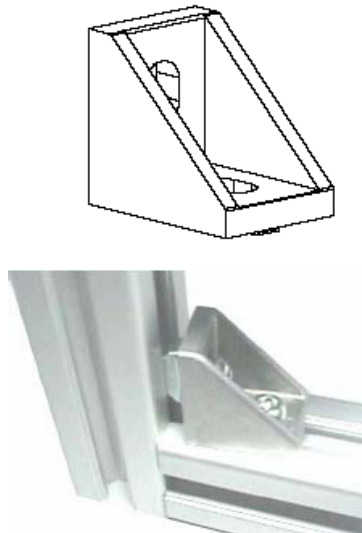
Used for **CP 2020-6** in right angled connections.

For **CP 2020-6**, used with button head screw M5x10 and half round nut CP-HRN5-6.

Material : Die Casted Aluminium

Part No :

CP-GE20x20-6



Gussett Element 30x30

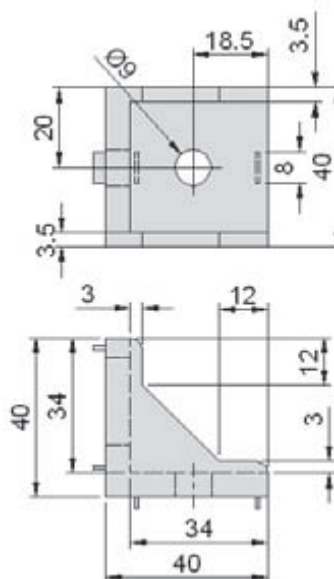
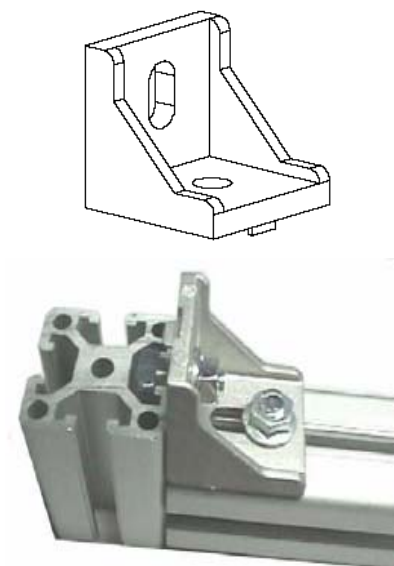
Used for **CP 3030-8** in right angled connections.

For **CP 3030-8**, used with button head screw M6x12 and rhombus nut CP-RN6-8.

Material : Die Casted Aluminium

Part No :

CP-GE20x28-8



Gussett Element 40x40

Used for **CP 4040-8** in right angled connections.

Used with hammer head screw CP-HH 8X20-8

Material : Die Casted Aluminium

Part No :

CP-GE40x40-8

Gussett Element 43x42

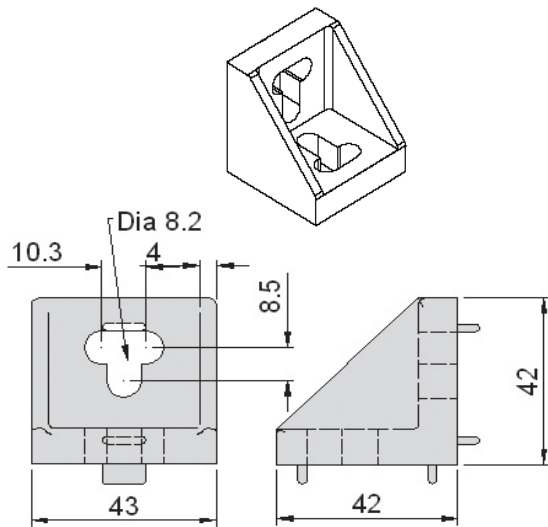
Used for **CP 4545-10** in right angled connections.

Used with hammer head screw CP-HH8X20-10

Material : Die Casted Aluminium

Part No :

CP-GE43x42-10



Gussett Element 42x88

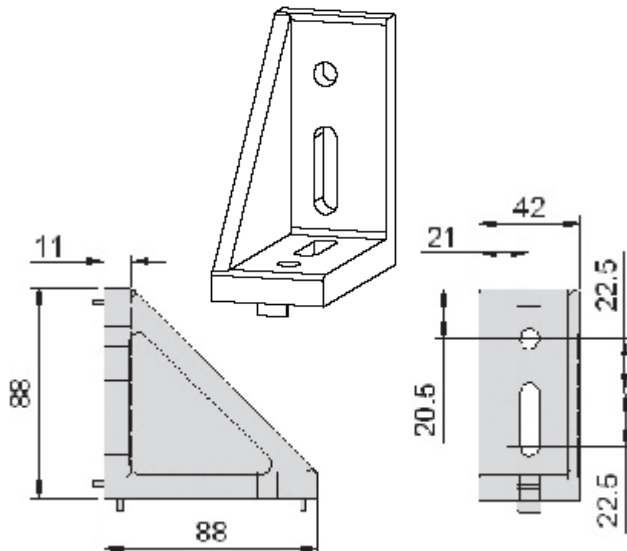
Used for **CP 4545-10** in right angled connections.

Used with hammer head screw CP-HH8X20-10

Material : Die Casted Aluminium

Part No :

CP-GE42x88-10



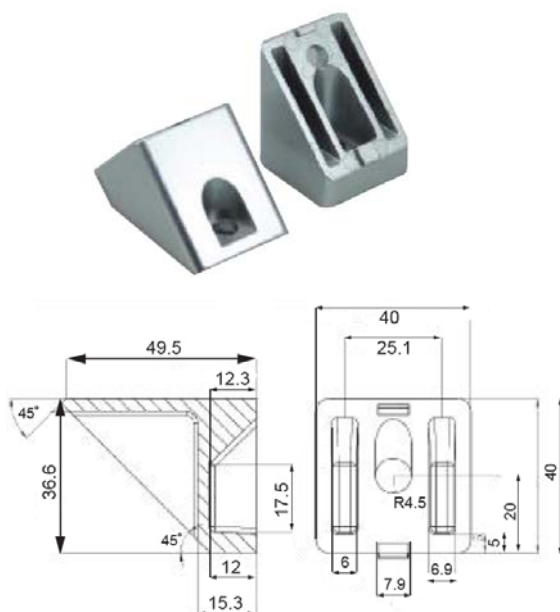
45 Degree Gussett Element

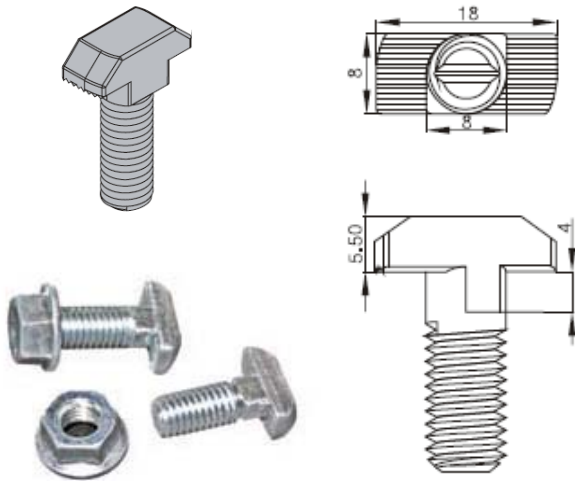
For 45 degree connection. Used with button head screw M8x30 for profile CP4040-8 & CP8080-8

Material : Die Casted Aluminium

Part No :

CP-45GE40x40-8





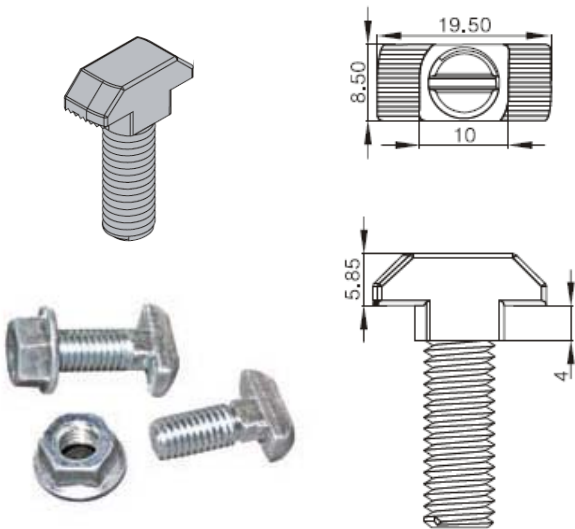
40 Profile Hammer Head (T-Bolt)

Slot 8 threaded cutting screw with M8 flange nut size 13.
Used for **CP 4040-8 series profile.**

Material : Zinc Plated Steel

Part No :

CP-HH8x20-8



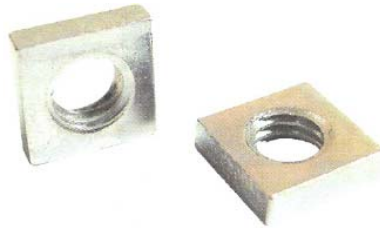
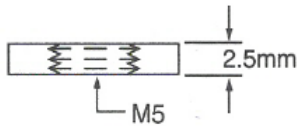
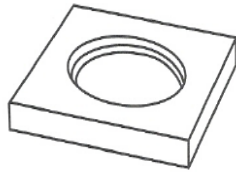
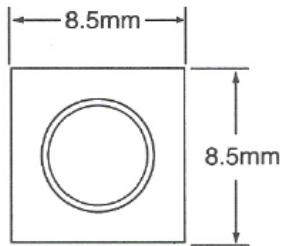
45 Profile Hammer Head (T-Bolt)

Slot 8 threaded cutting screw with M8 flange nut size 13.
Used for **CP 4545-10 series profile.**

Material : Zinc Plated Steel

Part No :

CP-HH8x25-10



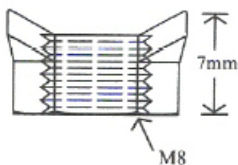
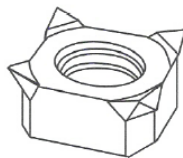
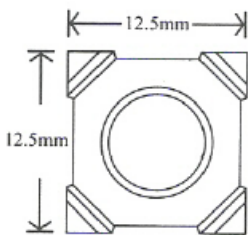
Square Nut M5

M5 Used for **CP 2020-6** profile only.

Material : Zinc Plated Steel

Part No :

CP-SN5-6/2020



Square Nut M6 & M8

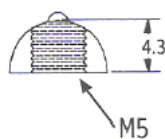
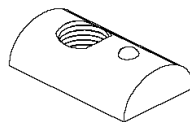
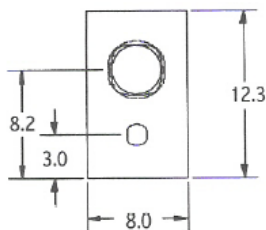
M6 used for **CP 3030-8** profile only. M8 used for **CP 4040-8**

profile only.
Material : Zinc Plated Steel

Part No :

CP-SN6-8/3030

CP-SN8-8/4040



CP-HRN4-6/2020

CP-HRN5-6/2020

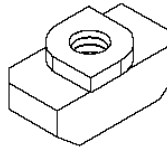
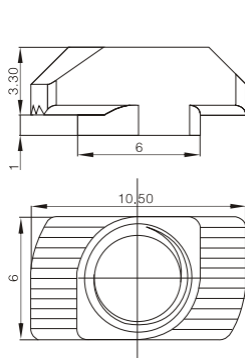
Half Round Nut - M4 & M5

Universally usable mounting element fits into the profile groove at any desired point by means of spring thrust piece. Material : Zinc Plated Steel

Part No :

CP-HRN4-6/2020 (For CP2020-6)

CP-HRN5-6/2020 (For CP2020-6)



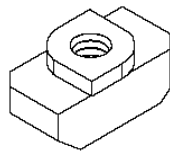
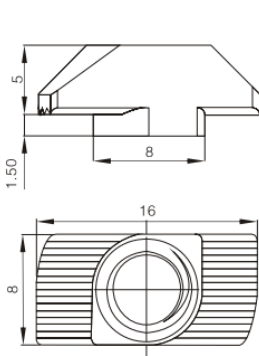
20 Profile Rhombus Nut M4

Used for **CP 2020-6** profile only.

Material : Zinc Plated Steel

Part No :

CP-RN4-6/2020



30 Profile Rhombus Nut M4, M5 & M6

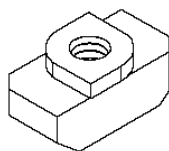
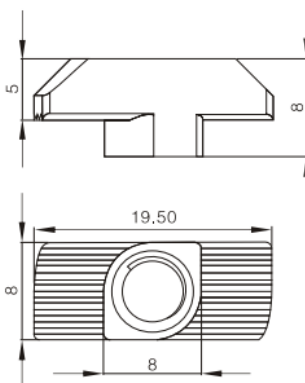
Used for **CP 3030-8** profile only. Material : Zinc Plated Steel

Part No :

CP-RN4-8/3030

CP-RN5-8/3030

CP-RN6-8/3030



40 Profile Rhombus Nut M4, M5 & M6

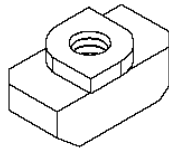
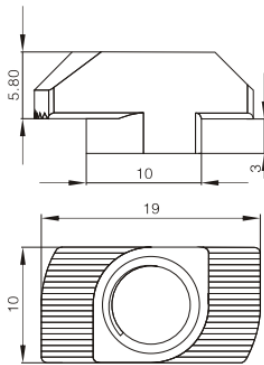
Used for **CP 4040-8** profile only. Material : Zinc Plated Steel

Part No :

CP-RN4-8/4040

CP-RN5-8/4040

CP-RN6-8/4040



45 Profile Rhombus Nut M4, M5, M6 & M8

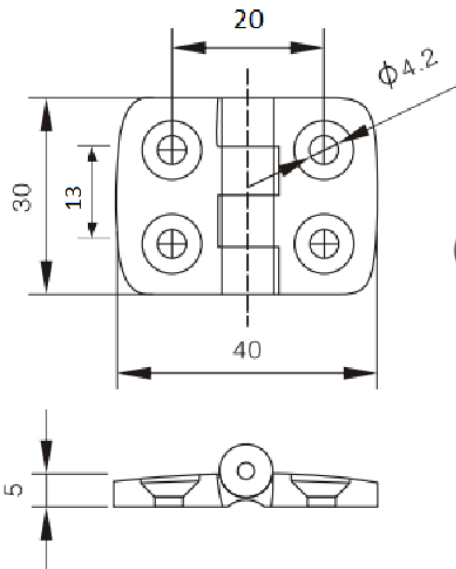
Used for **CP 4545-10** profile only. Material : Zinc Plated Steel
Part No :

CP-RN4-10/4545

CP-RN5-10/4545

CP-RN6-10/4545

CP-RN8-10/4545



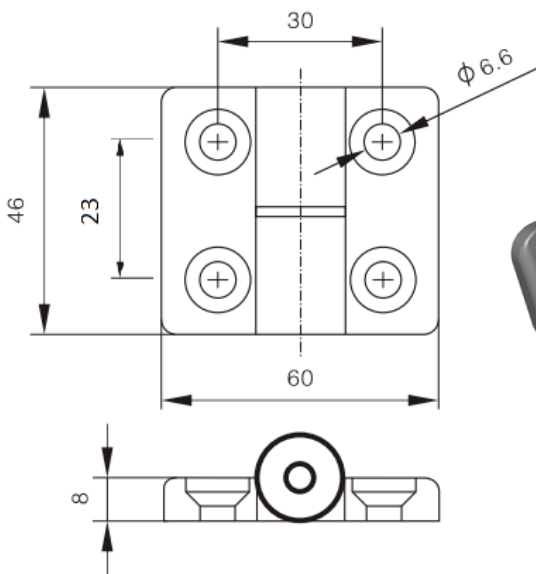
Hinge 20x20 profile

Use for **CP 2020-6** profile. Use with C'sunk screw M4x8 & lozenge nut M4.

Material : Polyamide

Part No :

CP-H2020-6



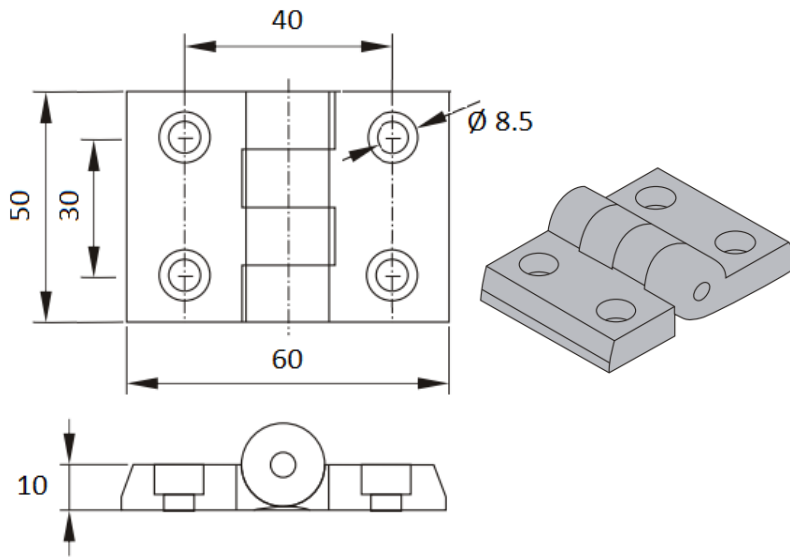
Hinge 30x30 profile

Use for **CP 3030-8** profile. Use with C'sunk screw M6x16 & rhombus nut CP-RN6-8.

Material : Polyamide

Part No : **CP-**

H3030-8



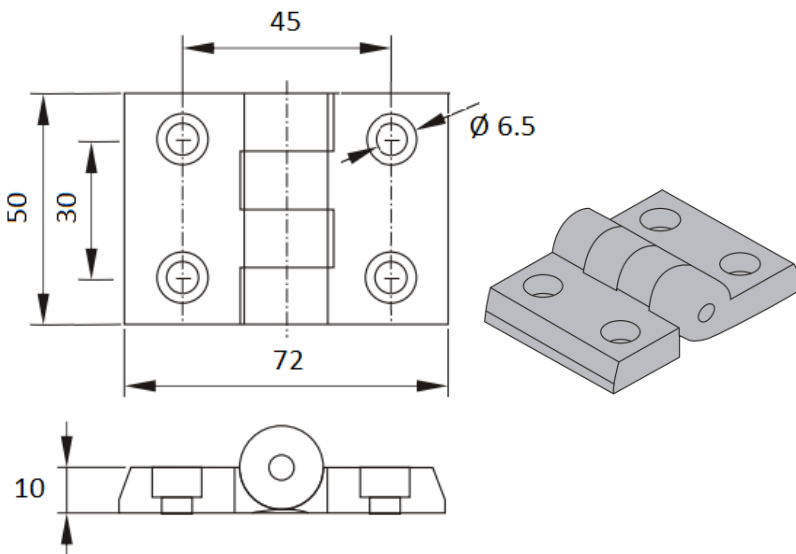
Hinge 40x40 profile

Use for **CP 4040-8** profile.
Use with C'sunk screw M6x16 & half round nut CP-HRN6-8.

Material : Polyamide

Part No :

CP-H4040-8



Hinge 45x45 profile

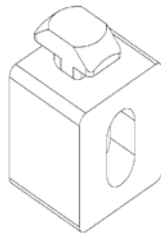
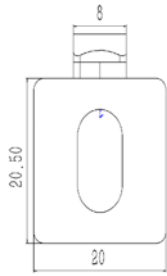
Use for **CP 4545-10** profile. Use with C'sunk screw M6x18 & rhombus nut CP-RN6-10/4545 or half round nut CP-

HRN6-8/4545

Material : Polyamide

Part No :

CP-H4545-10



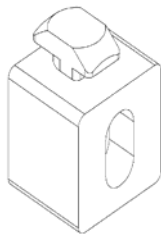
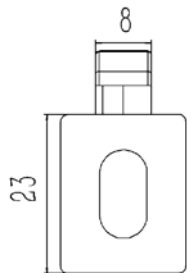
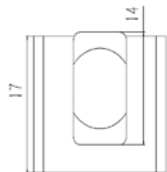
Multi Block

Use for **CP 3030-8** profile.

Material : Polyamide Part

No :

CP-MB-8/3030



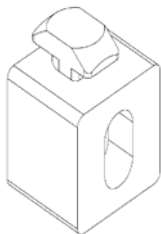
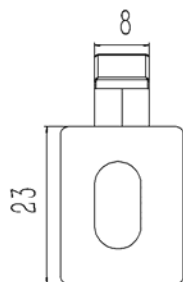
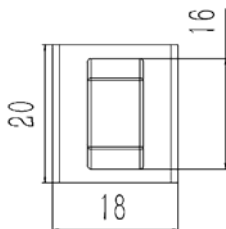
Multi Block

Use for **CP 4040-8** profile.

Material : Polyamide Part

No :

CP-MB-8/4040



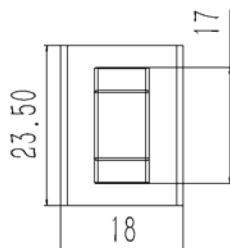
Multi Block

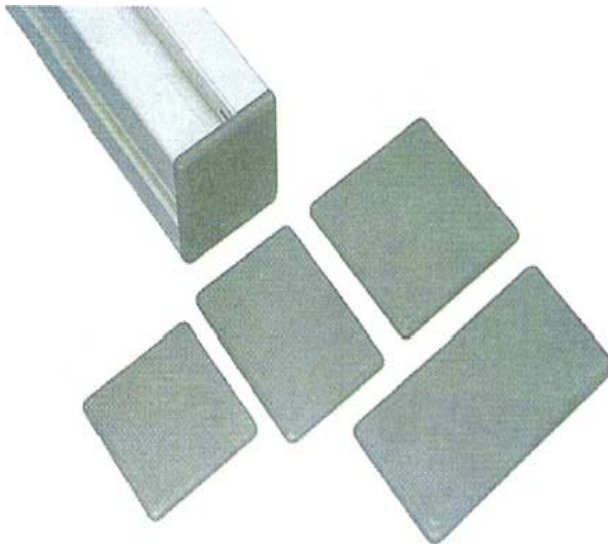
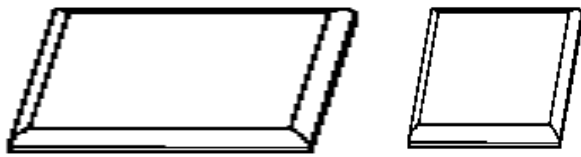
Use for **CP 4545-10** profile.

Material : Polyamide

Part No :

CP-MB-10/4545





End Cap

End cover for profile.

Thickness : 3mm

Material : Polyamide

Part No :

CP-EC2020-6

CP-EC2040-6

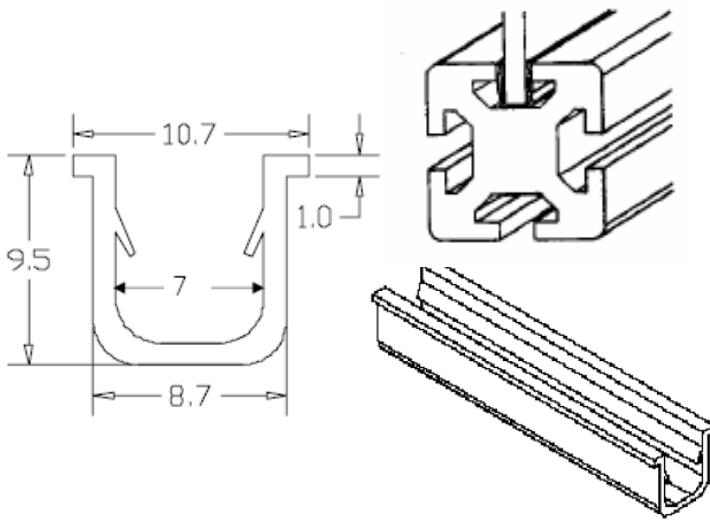
CP-EC3030-8

CP-EC3060-8

CP-EC4040-8

CP-EC4080-8

CP-EC8080-8



U-Strip

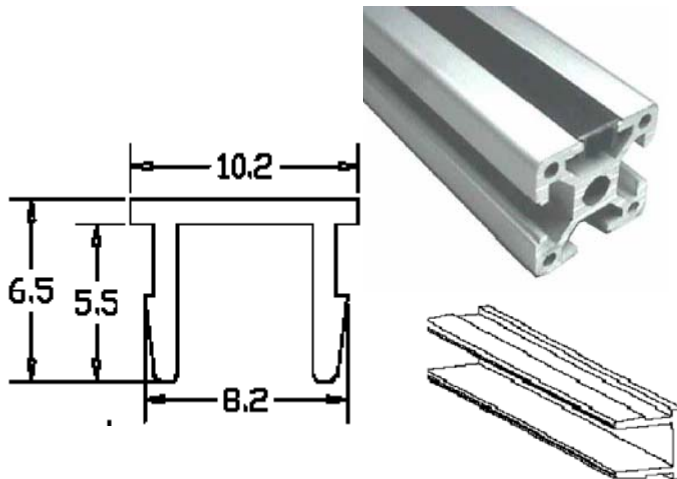
Use for **CP 4040-8** profile.

Standard length : 2 m

Material : Extruded PVC

Part No :

CP-US2000-8



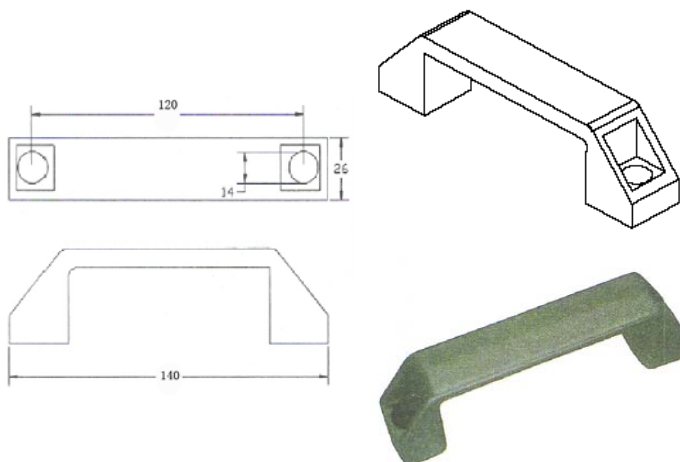
Black Strip

Use for **CP 4040-8** profile.

Standard length : 2 m

Material : Extruded PVC

Part No : **CP-BS2000-8**



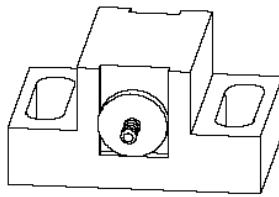
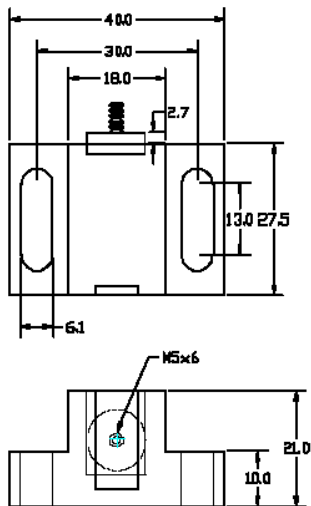
Handle

Use for **ALL** profile.

Material : Polyamide

Part No :

CP-HANDLE



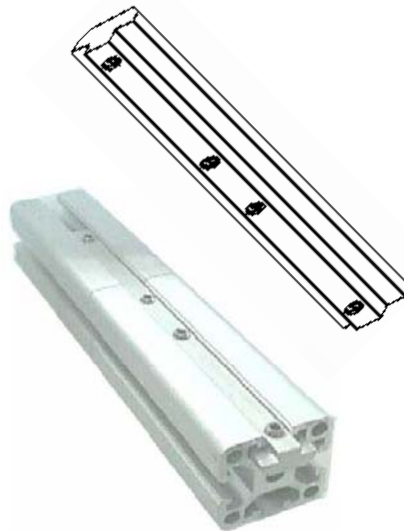
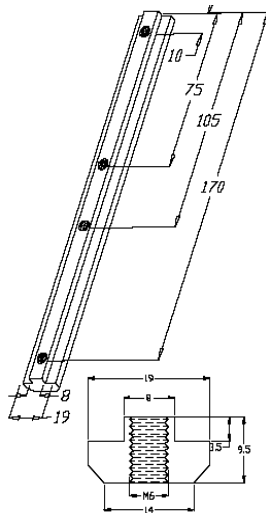
Magnetic Lock

Plastic case with M5x6 head.

Material : Polyamide & Magnetic

Part No :

CP-MGL-8



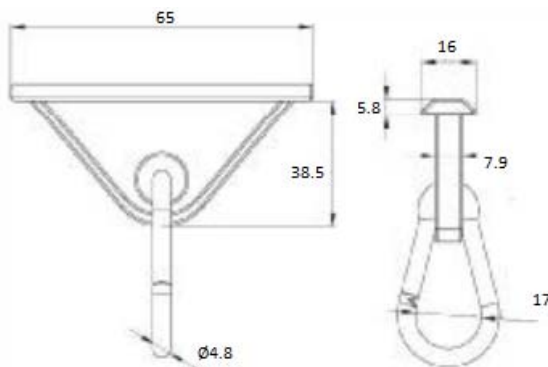
Joint Connector

Joint Connector to be used in **CP4040-8** profile with 4 pieces M6 set screw.

Material : Zinc Plated Steel

Part No :

CP-JC6-8



Tool Hanger

Tool Hanger to be used in **CP3030- 8, CP4040-8 & CP4545-10** profile.

Material : Sliding Part : ABS

Hook : Steel Zinc Plated

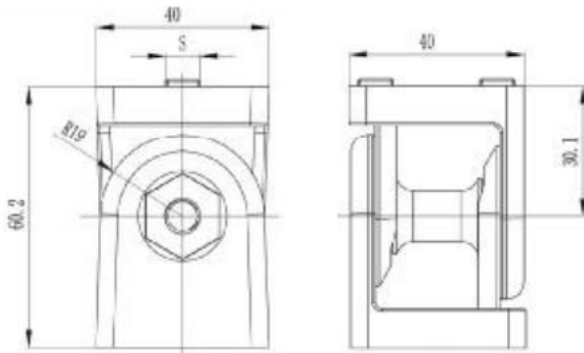
Part No : **CP-TH8/10**

Swivel Joint 30x30

Material : Die Casted Aluminium

Part No :

CP-SJ 30X30-8

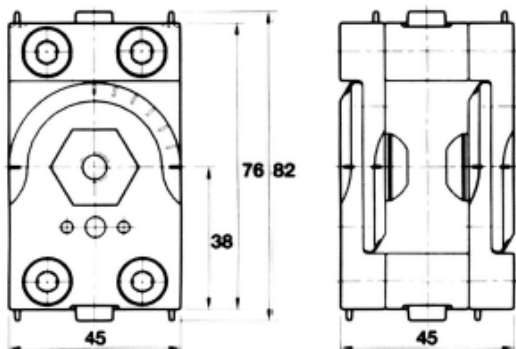


Swivel Joint 40x40

Material : Die Casted Aluminium

Part No :

CP-SJ 40X40-8



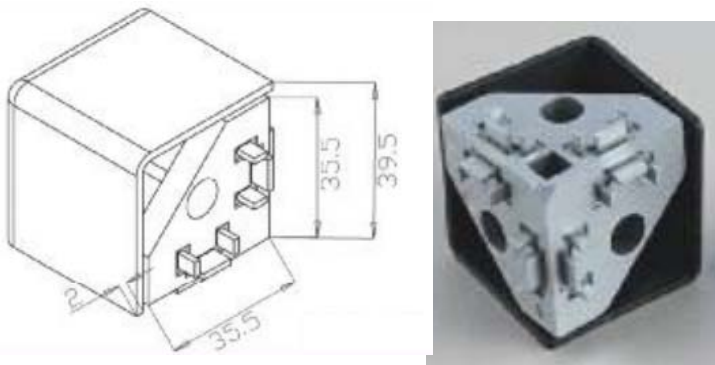
Swivel Joint 45x45

Material : Die Casted Aluminium

Part No :

CP-SJ 45X45-10





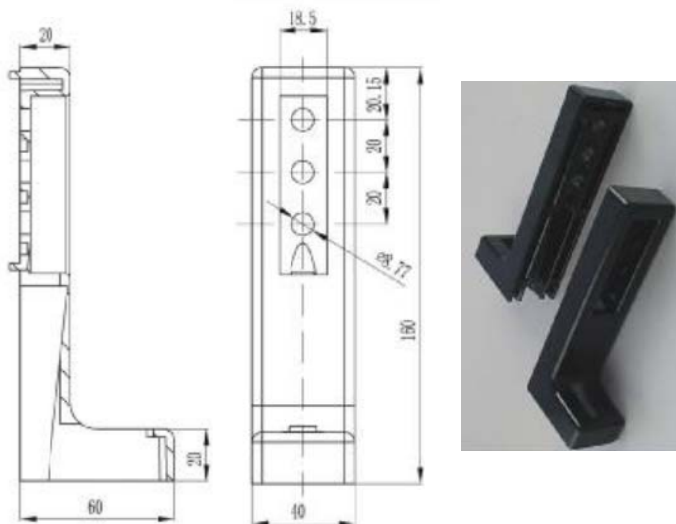
3 Way Connector / Cover Cap

Used for CP4040-8 profile

Material : Die Casted Zinc + Polyamide Cover

Part No :

CP-3WC 40X40-8

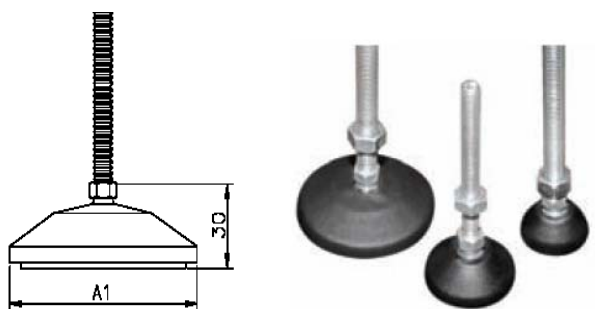


Floor Bracket

Material : Die Casted Aluminium

Part No :

CP-FB



Footmounting

Material : Polyamide foot pad c/ w Zinc Plated Steel thread & nut.

Part No :

Example: CP-FM40M8X50

CP-FM40(Thread)

CP-FM50(Thread)

CP-FM80(Thread)

Thread (mm)	A1 (mm)
M8 X 50	40
M10 X 100	50
M12 X 100	80



DYNAMIC MARKETING & SUPPLIES

(Co. No. SA0250879-W)

No. 25, Jalan Putra Perdana 1/4,

Taman Putra Perdana,

47130 Puchong, Selangor.

Tel: +603 - 8066 4656

Fax: +603 - 8066 4656

Email: enquiry@dynamicmns.com

Website: www.dynamicmns.com

